

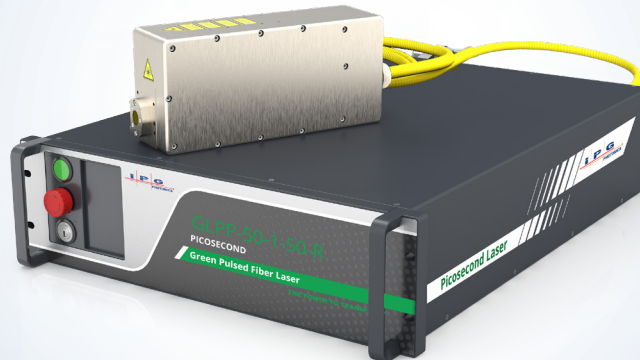


GLPP-50-1-50-R

Green Picosecond Hybrid Laser

NEW PRODUCT

Up to 50 W, 1-5 ps



Applications

- ▶ Precision Micromachining
- ▶ Microdrilling
- ▶ Thin Film Ablation
- ▶ Photomask Cutting
- ▶ Medical Device Manufacturing
- ▶ LED Dicing
- ▶ Solar Cell Structuring
- ▶ Fine Tube Cutting
- ▶ Glass, Silicon, Ceramics, Polymer and Composite Material Processing



Features

- ▶ Wavelength 515 nm
- ▶ Output Power up to 50 W
- ▶ Pulse Energy up to 50 μ J
- ▶ High Peak Power up to 50 MW
- ▶ Pulse Duration Options 1-5 ps
- ▶ Repetition Rate up to 2 MHz
- ▶ Low-maintenance
- ▶ Rugged Design

IPG Photonics NEW **GLPP-50-1-50** green hybrid-fiber picosecond laser provides high peak power with scalable average output power of 50 W and customer selected pulse durations in the range of 1 to 5 ps at full operational repetition rate range of 50-2000 kHz.

The fiber design allows for the adjustment of peak power and/or pulse repetition rate without affecting any of the output beam parameters. IPG's novel fiber laser is much more efficient, compact and easy to integrate into OEM equipment than conventional lasers now on the market. It is ideal for applications in precision micromachining.

The excellent beam quality, ultrashort pulse duration and high pulse energy combine to provide peak power densities suitable for micromachining virtually any material: metal, glass, ceramic, silicon, plastics. The ultrashort pulse duration results in a very small heat affected zone.

GLPP-50-1-50-R

Green Picosecond Hybrid Laser

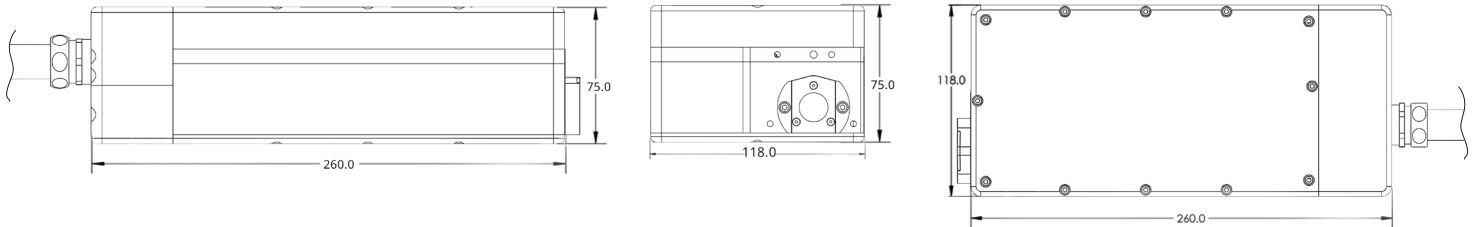
Optical Characteristics*

Wavelength, nm	515
Max. Average Power, W	Up to 50
Pulse Energy, μJ	Up to 50
Pulse Duration, ps	1-5
Peak Power, MW	Up to 50
Repetition Rate, kHz	50-2000
Beam Quality, M^2	<1.3

*Customer can select models within specified maximum power, maximum pulse energy and pulse durations in 1 to 5 ps range. Shorter pulse durations and pulse energies are available upon request.

General Characteristics

Control Unit Dimensions (W × D × H), mm	448×580×133
Optical Head Dimensions (W × D × H), mm	75×260×118
Cooling	Water-cooled
Supply Voltage, VAC	100-240, 50/60 Hz
Power Consumption, W	<1000 W



+1 (508) 373-1100; sales.us@ipgphotonics.com
 +49 2736 44200; sales.europe@ipgphotonics.com (European Inquiries)

www.ipgphotonics.com

Legal notices: All product information is believed to be accurate and is subject to change without notice. Information contained herein shall legally bind IPG only if it is specifically incorporated into the terms and conditions of a sales agreement. Some specific combinations of options may not be available. The user assumes all risks and liability whatsoever in connection with use of a product or its application. IPG, IPG Photonics, The Power to Transform and IPG Photonics' logo are trademarks of IPG Photonics Corporation. © 2020 IPG Photonics Corporation. All rights reserved. **Patents Pending.**

MAX. AVERAGE OUTPUT POWER: 100 W
 MAX. PEAK OUTPUT POWER: 100 MW
 PULSE DURATION: 1-5 ps
 PULSE REPETITION RATE: 50-2000 kHz
 WAVELENGTH RANGE: 500-1200 nm

**DANGER - INVISIBLE LASER
 RADIATION AVOID EYE OR SKIN
 EXPOSURE TO DIRECT OR
 SCATTERED RADIATION
 CLASS 4 LASER PRODUCT**
 IEC 60825-1:2014

The Power to Transform®