

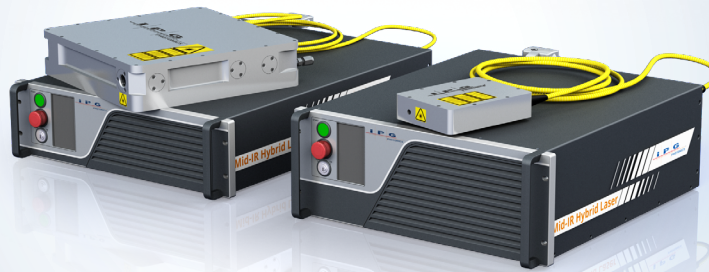


# HLPN-2050/2060 Series

## Ho:YLF Hybrid Fiber-to-Bulk Nanosecond Lasers

NEW PRODUCT

Acousto-optically Q-switched Optical Heads



### Applications

- ▶ Plastics Marking
- ▶ Spectroscopy
- ▶ Plastics Cutting & Welding
- ▶ LIDAR
- ▶ Medical Therapy, Surgery
- ▶ OPO Pump Source



### Features

- ▶ Output Power up to 80 W
- ▶ Pulse Duration 10-500 ns
- ▶ Pulse Energy up to 80 mJ
- ▶ TEM<sub>00</sub> Beam Mode
- ▶ Repetition Rate up to 40 kHz

IPG Photonics' HLPN-2050/2060 Holmium:YLF laser provides 10 - 500 nanosecond pulses at  $\sim 2.05 \mu\text{m}$  with pulse energies up to 80 mJ, output powers up to 80 W at repetition rates up to 40 kHz. The Q-switched Ho:YLF head is pumped by IPG's efficient and reliable Thulium fiber laser. The HLPN-2050/2060 2.05  $\mu\text{m}$  pulsed laser addresses a wide range of materials processing, scientific and medical applications.

# HLPN-2050/2060 Series

## Ho:YLF Hybrid Fiber-to-Bulk Nanosecond Lasers

Optical Characteristics	HLPN-20-10-15	HLPN-40-10-40	HLPN-80-10-80
Wavelength*, nm	2050/2060		
Linewidth, nm	<1		
Polarization	Linear, >500:1		
Max. Average Power, W	15	40	80
Max. Pulse Energy, mJ	20 (0-500 Hz) 10 (at 1.5 kHz) 1 (at 15 kHz)	40 (0-500 Hz) 20 (at 2 kHz) 2 (at 20 kHz)	80 (0-500 Hz) 40 (at 2 kHz) 4 (at 20 kHz)
Pulse Width, ns	10-500		
Max. Peak Power, MW	2	4	8
Repetition Rate, kHz	0-40		
Beam Quality, M <sup>2</sup>	<1.1	<1.2	<1.3
Output Beam Size, mm	~1.1	~1.3	~1.5

General Characteristics	50 W Tm Fiber Laser	120 W Tm Fiber Laser	(2) 120 W Tm Fiber Laser
Pump Laser	50 W Tm Fiber Laser	120 W Tm Fiber Laser	(2) 120 W Tm Fiber Laser
Laser Head Dimensions (W x D x H), mm	170 x 130 x 40	320 x 325 x 80	320 x 430 x 80
Pump Laser Cooling**	Water-cooled***		
Laser Head Cooling	Conductive	Water-cooled****	
Supply Voltage 50-60 Hz, VAC	Single-phase, 110-240	Single-phase, 208-240	

\* Nonlinear conversion to 2nd through 8th harmonics is available upon request

\*\* Water Chiller is not included

\*\*\* Optional Air-cooling is available upon request

\*\*\*\* Optional Air or conductive cooling is available upon request

+1 (205) 307-6677  
[sales.us@ipgphotonics.com](mailto:sales.us@ipgphotonics.com)  
[www.ipgphotonics.com](http://www.ipgphotonics.com)

Legal notices: All product information is believed to be accurate and is subject to change without notice. Information contained herein shall legally bind IPG only if it is specifically incorporated into the terms and conditions of a sales agreement. Some specific combinations of options may not be available. The user assumes all risks and liability whatsoever in connection with use of a product or its application. IPG, IPG Photonics, The Power to Transform and IPG Photonics' logo are trademarks of IPG Photonics Corporation. © 2016-19 IPG Photonics Corporation. All rights reserved. Protected by US patents 6,960,486; 7,548,571 and applicable licenses.

MAX. AVERAGE OUTPUT POWER: 160 W  
 MAX. PEAK OUTPUT POWER: 16 kW  
 PULSE DURATION: 10-500 ns  
 PULSE REPETITION RATE: 0-40 kHz  
 WAVELENGTH RANGE: 1800-2200 nm

DANGER - INVISIBLE LASER  
 RADIATION AVOID EYE OR SKIN  
 EXPOSURE TO DIRECT OR  
 SCATTERED RADIATION  
 CLASS 4 LASER PRODUCT  
 IEC 60825-1:2014

The Power to Transform®