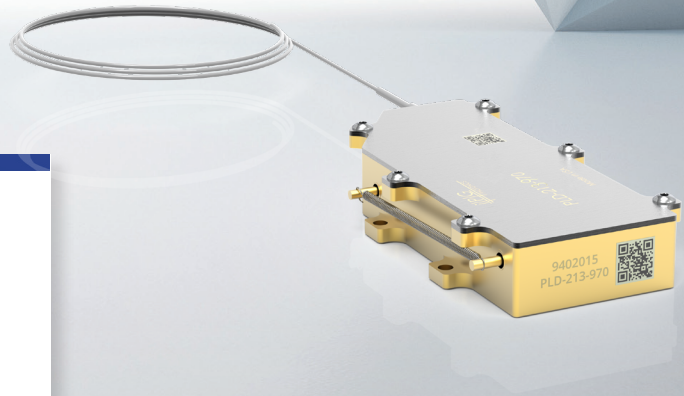
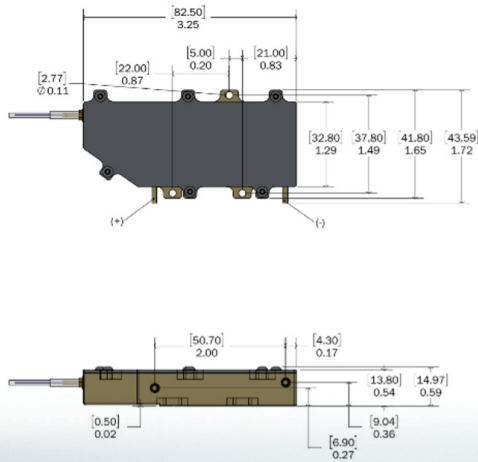


PLD-213-970-CH, 108 W

Multi-mode Fiber-coupled Packaged Diodes



FEATURES

- ▶ 970 nm Center Wavelength
- ▶ Wavelength Stabilization and Dichroic Options
- ▶ 108 W Output Power
- ▶ 0.16 NA into 110 μm Fiber Core Diameter
- ▶ High Reliability
- ▶ Robust Compact Package



APPLICATIONS

- ▶ Amplifier Pumping
- ▶ Direct Diode Lasers
- ▶ Laser Pumping
- ▶ Material Processing
- ▶ Graphic Arts / Printing
- ▶ Medical & Dental
- ▶ Illumination
- ▶ Photovoltaics

IPG Photonics' **PLD-213-970-CH** fiber-coupled packaged diodes provide up to 108 W of output power within 0.16 NA. PLD-213 diode features include a 110 μm fiber core diameter and 970 nm center wavelength. Wavelength stabilization and dichroic options are also available.

IPG's best-in-class diode technology offers an ideal combination of power, reliability and form factor. We manufacture to rigorous telecom-grade standards in the world's largest high power diode fab. Each wafer is individually qualified, which sets IPG apart from alternative industrial pump products using short-lived diode bars and bar-stack technologies. PLD-213 packaged diodes are preferred components for fiber amplifier and laser pumping, material processing and direct diode applications.

PLD-213-970-CH, 108 W

Multi-mode Fiber-coupled Packaged Diodes

| Optical and Electrical Characteristics* | PLD-213-970-CH |
|---|----------------|
| Center Wavelength, nm | 968.5 |
| Center Wavelength Tolerance, nm | ±5.5 |
| Output Power, W (Typ./Min) | 108/100 |
| Wavelength Shift in Current Range 14 - 18 A, nm/A | 0.55 |
| Power Shift in Current Range 14 - 18 A, W/A | 7.6 |
| Spectral Width, nm | 4±2 |
| Threshold Current (I_{TH}), A | 1.7 |
| Operating Current (I_{OP}), A | 14 |
| Forward Voltage, V | <14.2 |
| Recommended Case Temperature, °C | 25 |

* Typical performance data measured at 14A, 25°C

Fiber Characteristics

| | |
|--|-----------|
| Fiber Core Diameter, μm | 110 |
| Fiber Cladding Diameter, μm | 125 |
| Fiber Buffer Diameter, μm | 230 |
| Typ./Max Beam Numerical Aperture (90% power) | 0.16/0.18 |
| Fiber Length, m | 1.9 |
| Minimum Fiber Bend Radius, mm | 30 |

Maximum Ratings

| | |
|--|-----------|
| Operating Current (I_{OP}), A | 18 |
| Reverse Voltage, V | 2.5 |
| Case Temperature, °C | 5 - 70 |
| Storage Temperature, °C | -20 to 60 |
| Lead Soldering Temperature (10 s max) °C | 300 |
| Relative Humidity, % | 85 |



+1 (508) 373-1100;
[IPGPhotonics.com/contact](https://www.ipgphotonics.com/contact)
www.ipgphotonics.com

