

LDD-700 INLINE PROCESS MONITOR

Multifactor Weld Process Measurement Tool



FEATURES

- ▶ High Speed, High Resolution
- ▶ Immune to Process Radiation
- ▶ Gives Data Similar to Sectioning, Immediately

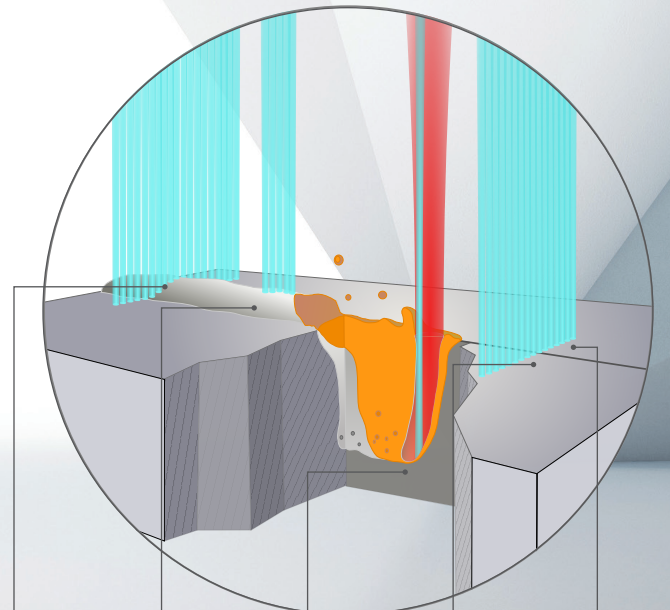
CAPABLE OF DETECTING DEFECTS INCLUDING:

- ▶ Over and Under Penetration
- ▶ Part Misalignment: Height Variation, Gap Width
- ▶ Weld Bead Defects: Blowouts, Underfill



APPLICATIONS

- ▶ Power Electronics
- ▶ Busbar Welding
- ▶ Battery Assembly
- ▶ E-Mobility
- ▶ Micro-electronics



Transverse Profile
Measures the finished weld bead transverse profile.



Finished Weld Surface
Measured just behind the melt pool captures the height of the finished weld bead.



Keyhole Depth
Measured inside the keyhole during the weld to determine actual weld penetration depth in real time.



Seam Profile
A sweep ahead of the process looks for joint position on the workpiece.



Workpiece Height
Measures the distance between the material surface and the welding optics.

LDD Integration on the IPG Beam Delivery



D30 Wobble/Welding Heads



D50 Wobble/Welding Heads



Mid-Power Scanner

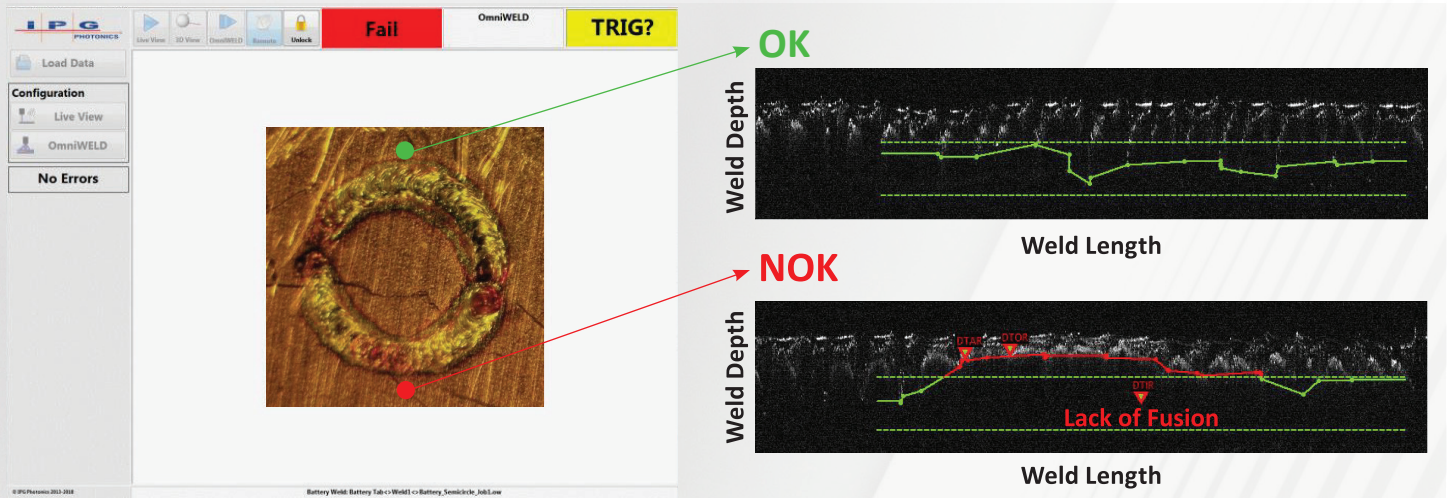


High-Power Scanner

LDD-700 INLINE PROCESS MONITOR

Copper to Nickel-plated Steel Lap Welding

Process Monitor Results



Contact

IPG Photonics looks forward to helping customers with their laser applications; our Application Facilities will work with end users and systems integration partners from proof-of-concept through process development for all materials processing applications.

Contact any of IPG worldwide application facilities to arrange complimentary sample processing, evaluation and project planning.

Go to www.ipgphotonics.com for more information on all of IPG products

THE APPLICATION

- ▶ Copper to Nickel-plated Steel Lap Weld for Busbar Applications
- ▶ Wobbling Improves Weld Stability



Process Equipment Demonstrated



YLR-1000
Single Mode



Mid-power
Scanner



LDD-700 Inline
Process Monitor

+1 (613) 887-2331

IPGPhotonics.com/contact

www.ipgphotonics.com

Legal notices: All product information is believed to be accurate and is subject to change without notice. Information contained herein shall legally bind IPG only if it is specifically incorporated into the terms and conditions of a sales agreement. Some specific combinations of options may not be available. The user assumes all risks and liability whatsoever in connection with use of a product or its application. IPG, IPG Photonics, The Power to Transform and IPG Photonics' logo are trademarks of IPG Photonics Corporation. © 2023 IPG Photonics Corporation. All rights reserved.

MAX. AVERAGE OUTPUT POWER: 40 mW
WAVELENGTH RANGE: 800-900 nm

DANGER - INVISIBLE LASER
RADIATION AVOID EYE OR SKIN
EXPOSURE TO DIRECT OR
SCATTERED RADIATION
CLASS 3B LASER PRODUCT

IEC 60825-1:2014